

HOLYHEAD – LOCAL NOTICE TO MARINERS 05/2025

Preliminary Notice - Asmund Wreck – Navigation Marks

Issued 1st January, 2025
Expires On UKHO issuing chart correction

The port hand buoy (Occasional, unlit) to the west of the wreck of the SS Asmund ($53^{\circ} 19'.3N$ $004^{\circ} 35'.4W$) in the Outer Harbour is to be permanently discontinued.

Two new buoys are to be established:

'AW' West Cardinal Mark
 $53^{\circ} 19'.295 N$ $004^{\circ} 35'.480 W$
YBY
West cardinal top mark,
VQ(9). Nominal range 2 Miles

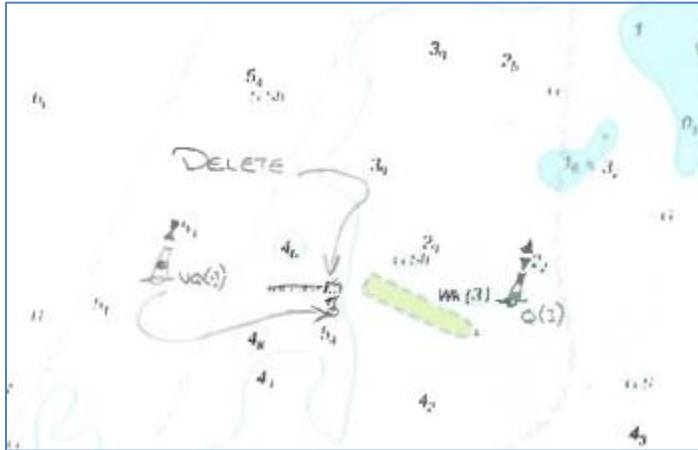
'AE' East cardinal Mark
 $53^{\circ} 19'.295 N$ $004^{\circ} 35'.350 W$
BYB
East cardinal top mark,
Q(3). Nominal range 2 Miles

It is intended to make the changes early 2025.

The improvement to the buoyage is being made with the consent of the Corporation of Trinity House under section 199(2) of the Merchant Shipping Act, 1995.

Trinity House and the UKHO will be informed once the change has been made and a chart correction will be issued in due course.

John Goddard
Harbour Master
Holyhead Harbour



Artists impression of chart correction
– NOT to be used for navigation

SS Asmund
c.1931



The only part of the structure visible
now is a 'shark fin' at very low tides.